

TRUST SUPER TUNING SYSTEM AIMING AT REAL COMPETITIONS.

600₀ WARNING METER

PART NUMBERS 16000801, 16000802 & 16000821

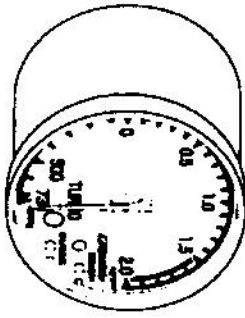


Instruction Manual

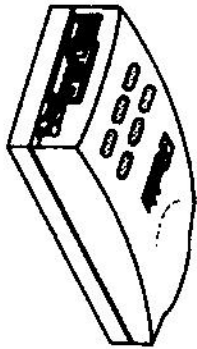
TRUST CO., LTD.

MADE IN JAPAN.

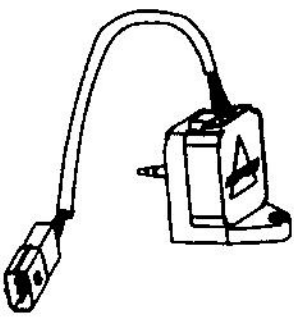
Parts List:



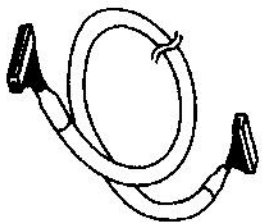
[1] Turbo Meter 1pc.



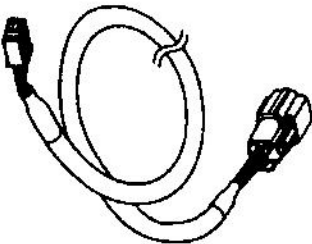
[2] Data Link Unit 1pc.



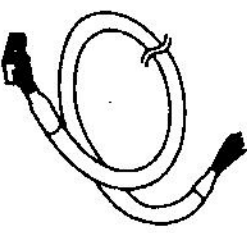
[3] Pressure Sensor 60cm 1pc.



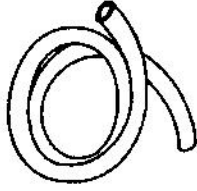
[4] Meter Harness 2m 1pc.



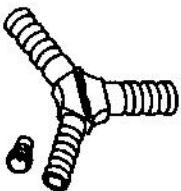
[5] Sensor Harness 3m 1pc.



[6] Electrical Harness 0.5m 1pc.



[7] 4 dia. Vacuum Hose 1pc.



[8] 3-Way Joint w/ Orifice 1pc.

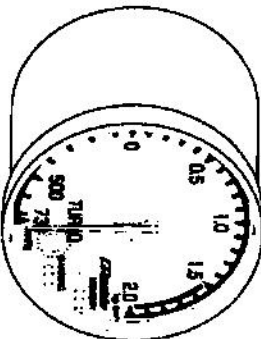
Operation:

Check Mode

Bad Harness Connection Check Feature

When there is a bad sensor or ground connection, the warning LED will flash quickly.
(Flash, flash -- flash, flash --flash, flash)

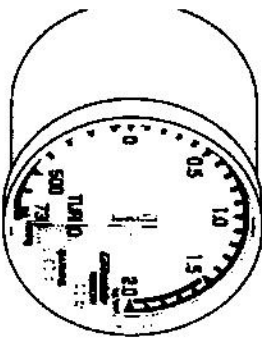
This feature does not check the connection on the power harness.



Short Circuit Check Feature

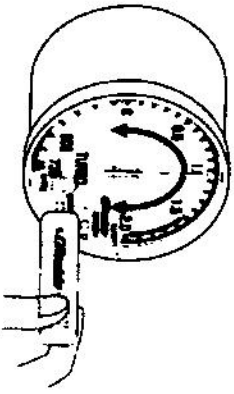
When there is a short circuit in the sensor or harness, the warning LED will flash slow.
(Flash -- flash -- flash)

This feature does not check for short circuits on the power harness.



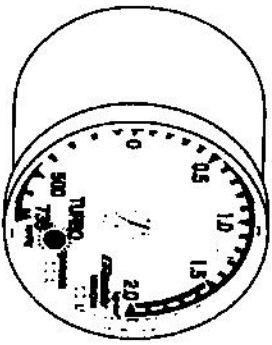
Operation:

Setting the Warning Point



To set the warning point, use the provided socket tool to turn the Adjust Knob to the desired warning value. After making the adjustment, wait for 5 sec. and the meter will program the new setting and return to "Real-time Meter Mode"

Warning Mode

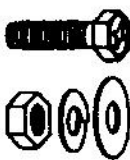
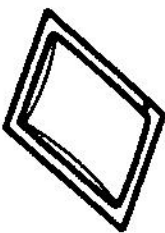
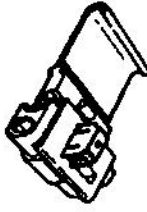


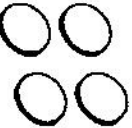
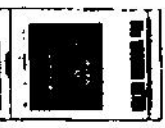
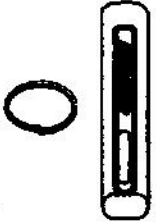


When the needle of the meter reaches the programmed warning point, the "Warning LED" (and optional warning light and/or buzzer) will activate. This will remain until the needle drops below the warning point.

Caution

- ⚠ Do not adjust the Warning Point when Driving.
- ⚠ Always remove the adjusting socket tool after making adjustments

Parts List:

- [9] Bolt, Washer, Split-washer, and Nut. 1pc. 
- [10] Mounting Cleaner 1pc. 
- [11] Electrical Tap 4pc. 
- [12] Wire Tie 15cm 4pcs. 
- [13] Harness Label Set 1pc. 
- [14] Double-sided Tape 1pc. 
- [15] Instruction Manual 1pc. 
- [16] Warning Socket Adjusting Tool 1pc. 

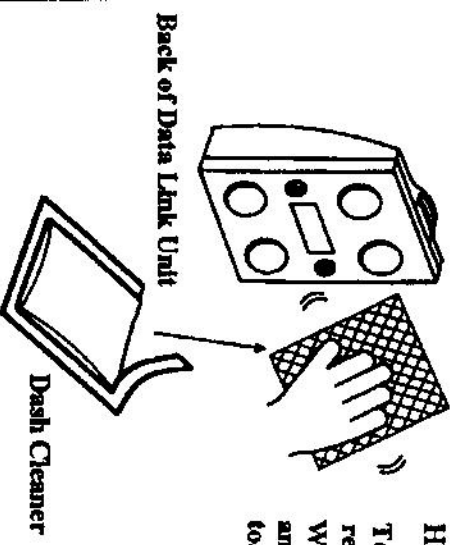
Installation:

Data Link Unit Mounting

When using the provided double-sided tape to mount the data link unit, clean the mounting surfaces with the provided dash cleaner

⚠ Caution

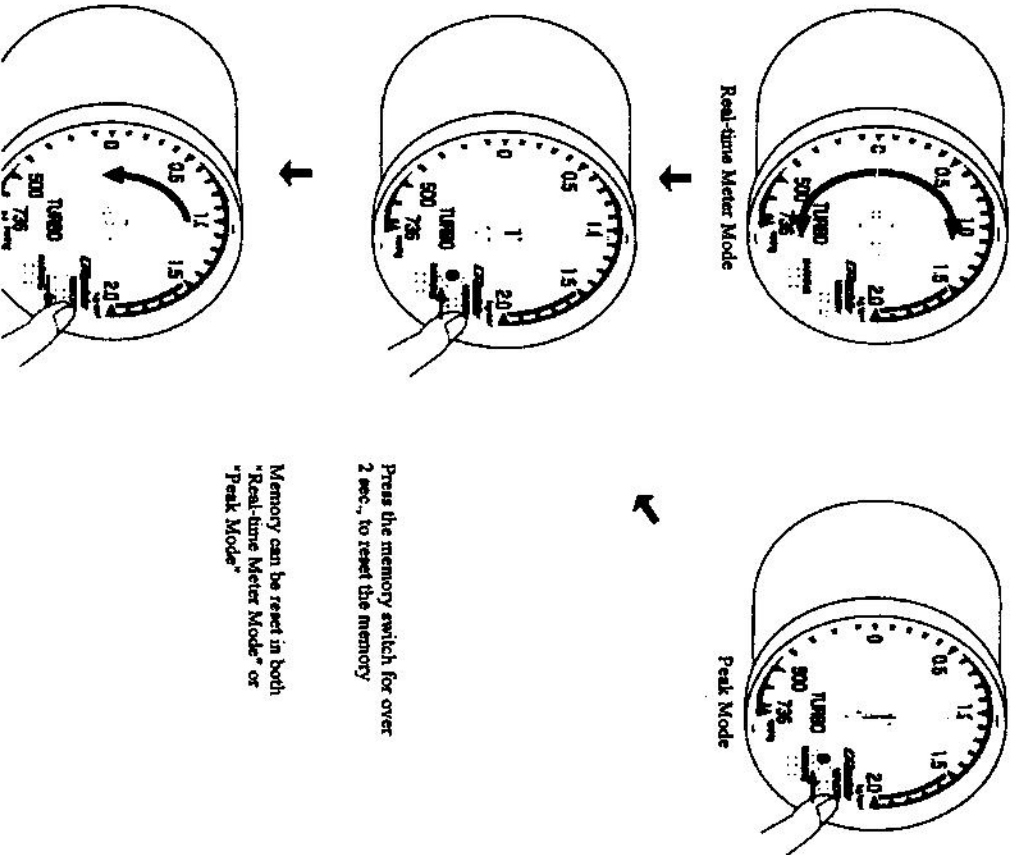
- ⚠ Do not use the dash cleaner on any other products.
- ⚠ If there is dirt, dust, or oil on the mounting surface, the double-sided tape may not adhere to the dash.



How to use:
Tear the silver package open and remove the dash-cleaner. Wipe the back of the data link unit and the dash surface, to be mounted to.

Operation:

Resetting the Memory

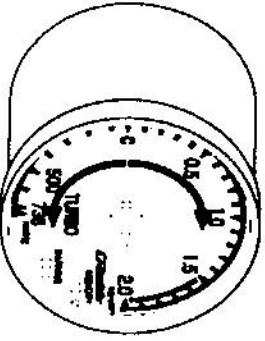


Press the memory switch for over 2 sec., to reset the memory

Memory can be reset in both "Real-time Meter Mode" or "Peak Mode"

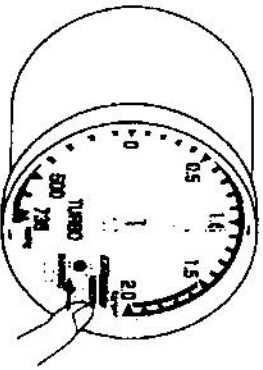
Operation:

Real-time Meter Mode:



Displays the turbo boost pressure reading

Peak Turbo Boost Pressure Mode:



Press memory switch momentarily to get into "peak mode"

When "peak mode" is turned on, the memory LED will illuminate and the meter will display the peak boost pressure achieved.

Press the memory switch again, to return to "real time mode"

Installation:

Meter Mounting

I Important

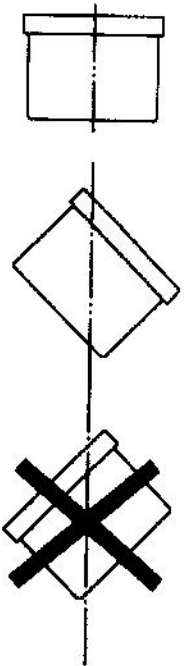
- When looking for a location to mount the meter, be sure not to have the meter interfere with the driver's view of the road or other important instruments.

Note

Mounting brackets for these warning meters are available for simple installation.
(GReddy Meter Band 369601 or GReddy Meter Holder 369602)

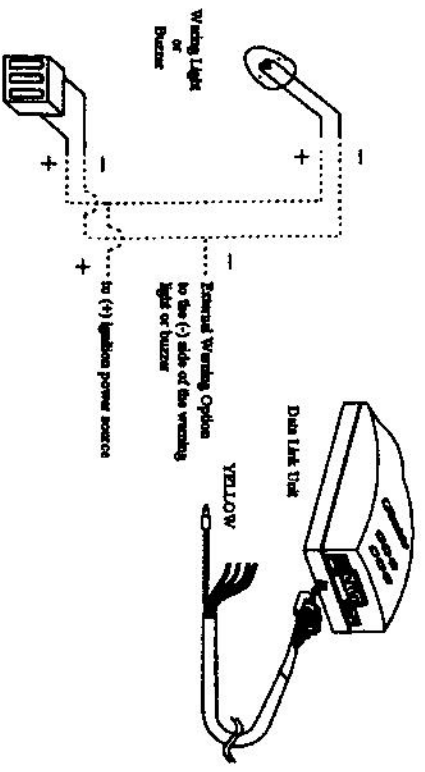
A Caution

Never mount the meter facing downward. Always mount the meter horizontally or facing upward. Mounting the meter facing downward can the meter to malfunction.

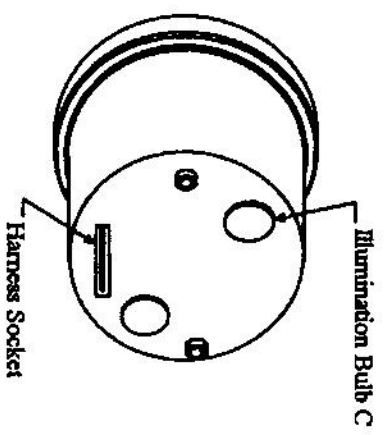
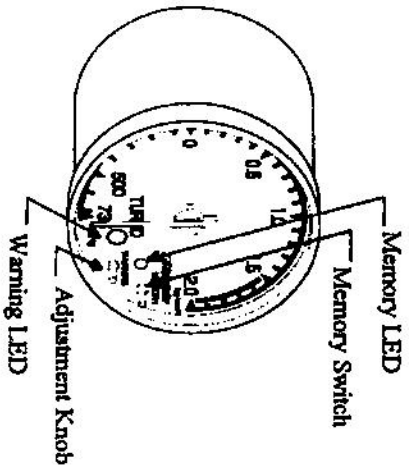


Installation:

External Warning Option Output



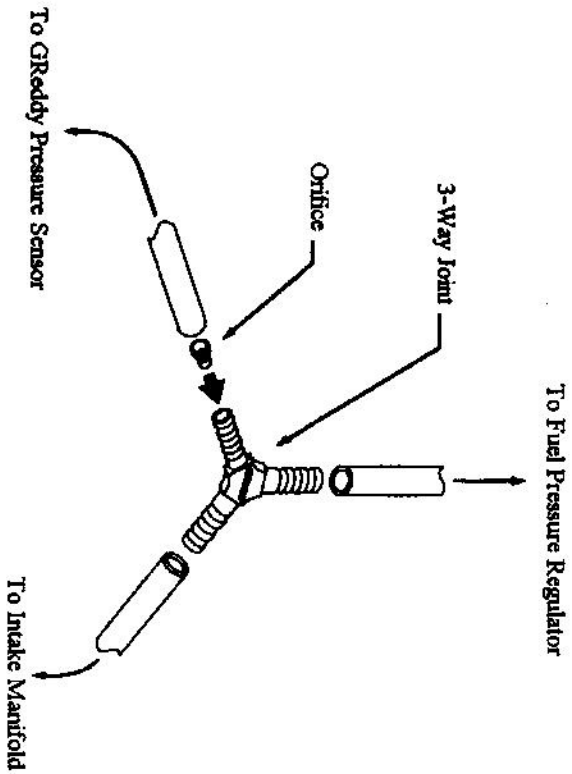
Operation:



- **Memory Switch**
 - Used to switch to "Peak" mode
 - Used to reset the memory
- **Memory L.E.D.**
 - Illuminates
 - Flashes when resetting the memory
- **Adjustment Knob**
 - Used to adjust the warning point (setting)
- **Warning L.E.D.**
 - Illuminates when in the warning mode
 - Flashes when the harness is disconnected or when there is a "short" in the electrical system

Installation:

If the needle of the meter moves irrationally at idle, use the provided orifice. Insert the orifice into the 3-way joint as shown below. (on the side to the sensor.)



⚠ Caution

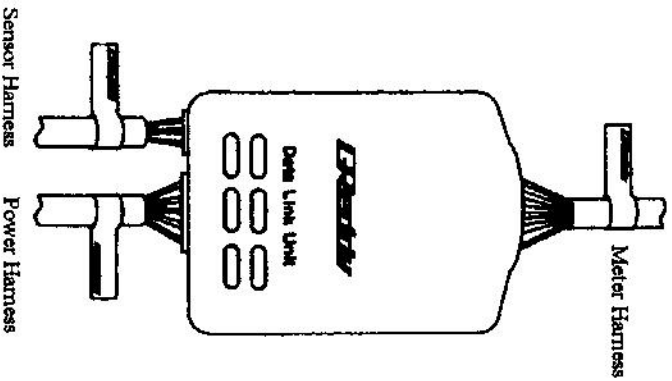
⚠ Make sure the orifice does not slip out of the 3-way joint.

Suggestions:

How to use the Harness Labels

If you are installing more than one warning meter, it is suggested to use the provided decal set to label each of the harness for each individual meter type.

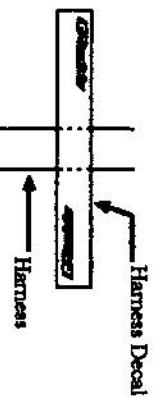
The decal set includes three labels: 1) Meter harness 2) Sensor Harness 3) Power Harness. Install as shown below.



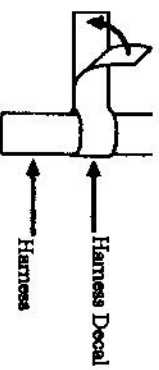
How to apply:

Peel label off from the decal sheet

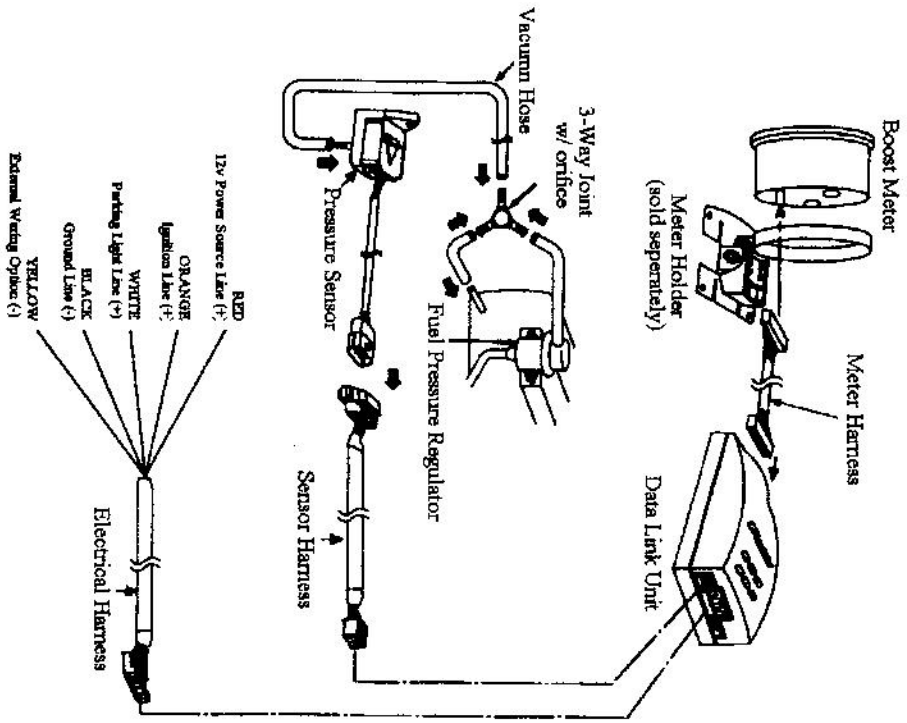
Apply as shown below



Fold the label onto the harness as shown below.

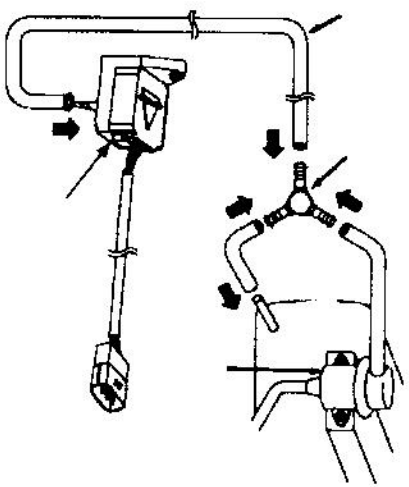


Installation:



Installation:

- ⚠ Caution**
- ⚠ Avoid mounting the sensor in a location where the sensor could get wet or hot.
 - ⚠ Make sure the sensor and the sensor harness is away from the ignition system. (i.e. ignition coil box) Noise (signal) from the ignition system may cause the meter to display faulty readings.



Important

The provided vacuum hose is 500mm, therefore it is important to mount the pressure sensor within it's reach.